

PROGENY

PROvision of Galileo Expertise, Networking and support for International Initiatives



PROGENY OBJECTIVES

- ▶ To support the activities launched under area 1 & 2 of the Galileo R&D second call;
- ▶ To prepare the ground for future R&D activities;
- ▶ To foster international cooperation and conduct preliminary international initiatives.

PROGENY OVERVIEW

- ▶ Customer : GJU
- ▶ Call : EU Sixth Framework Programme, Galileo second call
- ▶ Offer submitted on 24th/09/2004 against other consortia led by Booz , Allen & Hamilton and IABG
- ▶ Coordinator :FDC
- ▶ Total Budget : 3.900.000 €
- ▶ Partners :ESYS and WSL
- ▶ Start date : December 2005
- ▶ Duration : 36 months



BUDGET SHARING

- The consortium composition including financial share is as follows:

FDC (France)	21%
ESYS (UK)	16%
WSL (BE)	2%
Subcontracting	20%
Provisions for experts	19%
Provisions for Demos	10%
Provisions for studies	7%
Communications tools	2%
GJU Management Reserve	5%
Total	<u>3860</u>

PROGENY CONSORTIUM

▶ PARTNERS



▶ SUBCONTRACTORS



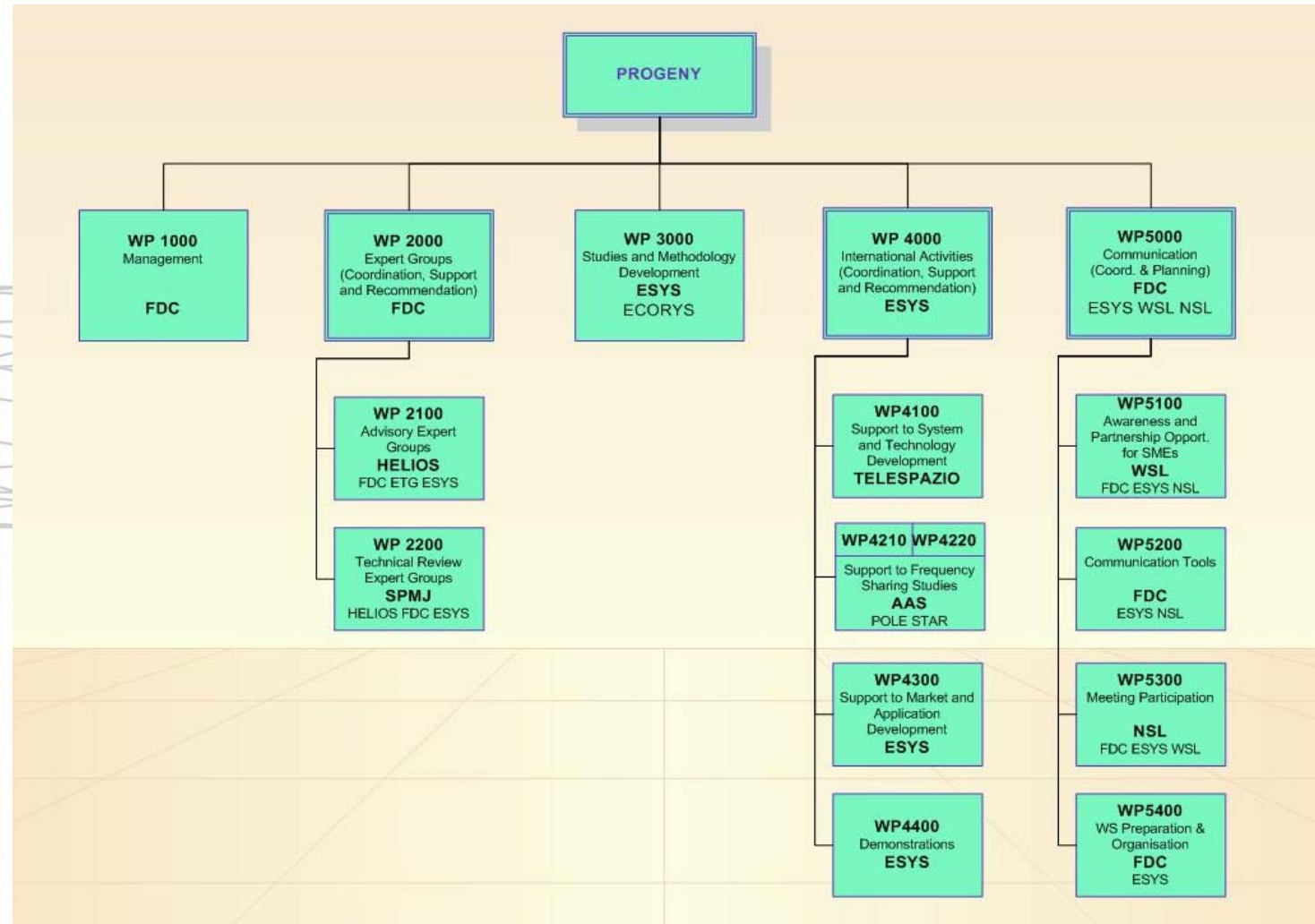
- ▶ Initial list of 300 experts coming from 24 countries
- ▶ Potential participation of 35 more partners, 25 outside Europe and 10 within the enlarged EU



PROGENY ACTIVITIES

- ▶ Three technical and one transverse activities, each with a Group Leader:
 - Support to European expertise in GNSS
Expert Groups (FDC)
Studies and methodology development (ESYS)
 - Support to International Activities (ESYS)
 - Communication (FDC)

WBS



WP 2000 : EXPERTS GROUPS

- ▶ Coordination, support and recommendation (FDC)
 - Set up and maintain an expert Database
 - Deal with all administrative issues regarding the participation of experts;
 - report and present consolidated recommendations to the GJU

- ▶ Advisory Expert Groups (HELIOS)
 - Identification of key priority areas ;
 - Proposition of experts lists to the GJU
 - Set-up and management of the Advisory WGs

- ▶ Technical Review Expert Groups (SPMJ)
 - Create and maintain an inventory (database) of Galileo R&D projects
 - Proposition of experts lists to the GJU
 - Set-up and management of the Technical Review WGs

WP 3000 : Support to Studies and methodology development

- ▶ Objective : To support the development and testing of methodologies for cost allocation and recovery
- ▶ Economic aspects:
 - Identification of suitable cost recovery models and evaluation
 - Analysis of the applicability of marginal cost pricing;
 - Assessment of the efficiency of each proposed model
 - Evaluation of constraints imposed by economic regulation
- ▶ Commercial aspects:
 - Identification and Assessment of equivalent cost recovery models in other relevant commercial fields;
 - Identification of relevant financial flows in the GNSS value chain;
 - Analysis of the potential commercial impact of proposed cost recovery schemes on commercial activity in the downstream supply chain

WP4000 : Support to international activities (1/3)

- ▶ WP4100 SUPPORT TO SYSTEM & TECHNOLOGY DEVELOPMENT : To manage the process of defining running and reviewing technical support studies such as :
 - Timing receiver interoperability,
 - Regional Ionospheric studies,
 - SAR Service extensions outside Europe,
 - SBAS and Galileo SoL concept interoperability, Interoperability between Galileo and local augmentations,
 - Characterisation of Galileo System performance in regions,
 - Galileo Regional Integrity Concept,
 - Tropospheric and Ionospheric studies

WP4000 : Support to international activities (2/3)

▶ WP 4200 SUPPORT TO FREQUENCIES SHARING STUDIES

- Participation of regional consultants in APG, CITELE and ITU-R WP8D/WP8B
- To address technically and with MSS operators the question of the adjacent band compatibility between Galileo PRS in 1559-1610 MHz and MSS carriers below 1559 MHz

▶ WP4300 SUPPORT TO MARKET AND APPLICATION DEVELOPMENT

- Undertake market and business studies for specific applications and regions and in particular China and India

WP4000 : Support to international activities (3/3)

▶ WP 4400 Demonstrations : To support the GJU in the selection of appropriate demonstration project and to monitor and coordinate the demonstrations such as:

- | | |
|---|-------------|
| • Venezuela CAT 1 | S. America |
| • COCESNA Corridor | S. America |
| • Rail Traffic Monitoring | S. America |
| • Safer Landing | Africa |
| • Vegetation Mapping | Australia |
| • Advanced Mine Traffic Management | Australia |
| • City Security Control Centre | S. America |
| • GNSS/Galileo based onboard Location | China |
| • Analysis of Land-Sea inter-modal traffic features | Europe |
| • Marine park Protection | Europe |
| • Galileo GLONASS interoperability | Middle East |
| • Galileo LBS Benefits | Japan |
| • China Aviation | E.China |
| • Brazil Aviation | Brazil |
| • ETC at the central roads of cities | Hong Kong |
| • Maritime Demonstration | China |
| • Railway Demonstration | W. China |
| • Offloading ops between FPSO and shuttle tanker | Brazil |

WP5000 : Communication activities

- ▶ **AWARENESS & PARTNERSHIP OPPORTUNITIES FOR SMEs (WSL)**
 - raise awareness in SMEs on the opportunities for them in the programme, and to encourage the participation of new Member States.
- ▶ **COMMUNICATION TOOLS (FDC)**
 - communication materials and tools to support the global strategy
- ▶ **MEETING AND CONFERENCE PARTICIPATION (NSL)**
 - determine meetings of interests for Galileo awareness actions,
 - prepare customised material,
 - perform their presentation
- ▶ **WORKSHOP AND EVENTS ORGNIZATION (FDC)**
 - To prepare and organize 2 events per year (user fora, workshops, information day) in enlarged Europe for approximately 100 participants and 1 event per year for approximately 50 participants;

Points of Contact

▶ Project Manager

- Frédéric COLLOMB from FDC
E-mail: frederic.collomb@fdc.fr
Phone: + 33 1 53 66 11 11
Fax.: + 33 1 53 66 11 00

▶ Project Officer

- Daniel LUDWIG from GJU
E-mail: daniel.ludwig@galileoju.com